



*The Webb Society*

# PUBLICATIONS

## ASTRO CD ROM #1 & #2

*includes:*

**SHAREWARE  
HUBBLE IMAGES  
OBSERVATIONS  
CCD IMAGE PROCESSING  
EDUCATIONAL SOFTWARE**

*No duplication of  
images  
or software!*



## ASTRO CD ROM #3

### Images

206Mb of images from Hubble,  
(every image released from  
1999-2002 Jan)  
ESO and other sources

### Software

Full versions of ...

Carte du Ciel

HN Sky

Observing Guide

S.A.C. Database 7.2

(Excel or Access required)

### Movies

Orion nebula fly-through

Hyades

SOHO

# SPECIAL OFFERS

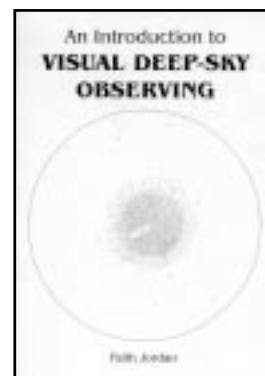
**A\$37.50 each : Any 2 CDs A\$67.50 : All 3 A\$97.50**

## Starting out?

### An Introduction to Visual Deep Sky Observing

by Faith Jordan

**A\$7.50**



# WEBB SOCIETY STAR ATLAS

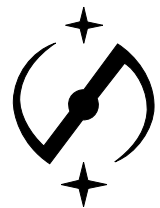
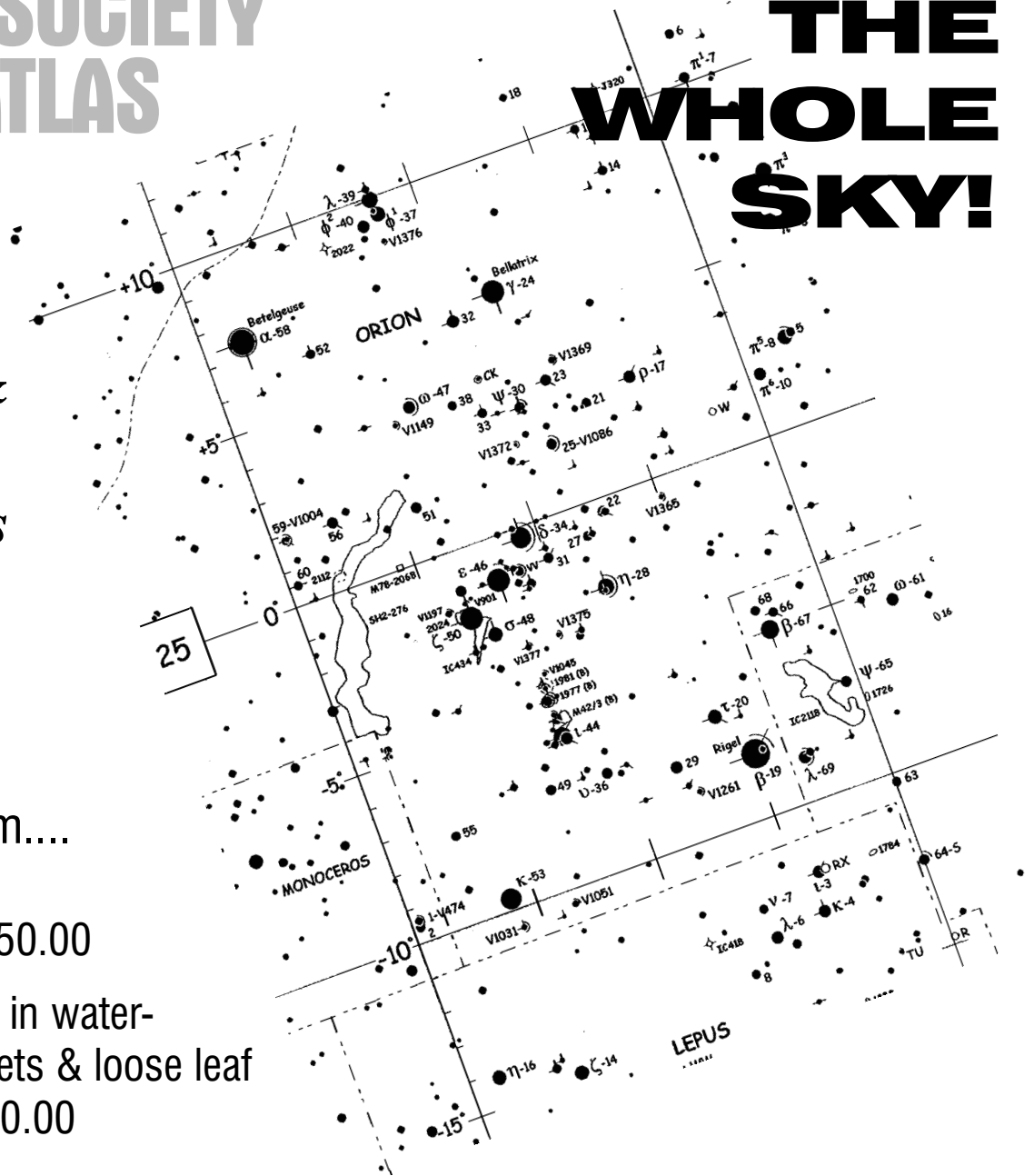
# THE WHOLE SKY!

*The most  
detailed &  
accurate  
atlas in its  
class!*

Two editions  
to chose from....

**Colour** @ A\$50.00

**Monochrome** in water-  
resistant pockets & loose leaf  
binder @ A\$30.00

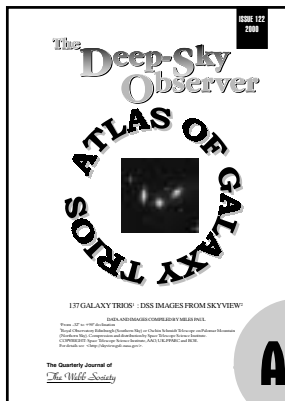


## WEBB SOCIETY OBSERVERS HANDBOOKS

- Volume 5..... Clusters of Galaxies**
- Volume 6..... Anonymous Galaxies**
- Volume 7..... The Southern Sky**
- Volume 8..... Variable Stars**

*Stocks are Low!  
Is this your  
last chance  
to complete  
the set?*

**Handbook A\$9 (or any 2 for A\$16)**

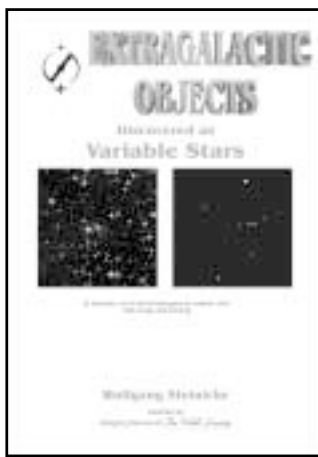
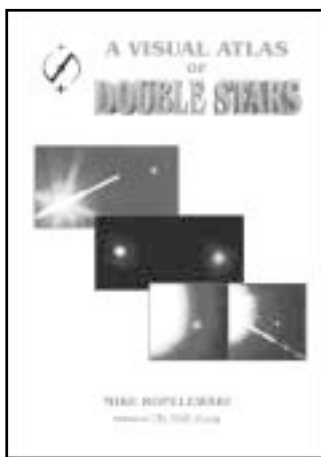


**A\$6**

**DOUBLE STAR CIRCULARS**  
 Issues 2, 3, 4 and 5  
 @ **A\$6** each  
 and issues 6-10  
 @ **A\$12**  
 each

**DOUBLE STAR CIRCULARS**  
 Issue 11  
 coming soon  
 @ **A\$20**

**A NEW RANGE OF PUBLICATIONS  
 FROM THE WORLD'S LEADING DEEP-SKY SOCIETY**



<p><b>A Visual Atlas of Double Stars</b>  <b>124 pages of interesting charts and data</b>          by <b>Mike Ropelewski</b> <b>A\$27</b></p>	<p><b>A Visual Atlas of the Magellanic Clouds</b>          Going South?  <b>A\$15</b></p>	<p><b>Extra-Galactic Objects Discovered as Variable Stars</b>          Try pushing your telescope to the limit ...  <b>A\$15</b></p>
---	---	--

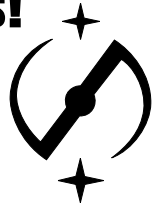
Any 2002 issue A\$15.00  
 Any 2001 issue A\$ 4.00  
 Earlier issues A\$ 3.00

**Be assured of  
 your copy!**



**A\$9**

**The Society's subscription is just  
 A\$50 (air) for 4 issues!**



**SPECIAL OFFER**  
**5 issues for the price of 4 as  
 you join!**

# ORDER FORM

Please send me the following: ....

Society Membership (Airmail A\$50 : Surface A\$45)		
Webb Society Star Atlas (colour version)	A\$50.00	
Webb Society Star Atlas (monochrome version in water-resistant pockets & loose leaf binder)	A\$30.00	
Astro CD-ROM No.1	A\$37.50	
Astro CD-ROM No.2	A\$37.50	
Astro CD-ROM No.3	A\$37.50	
Any 2 CD-ROMs	A\$67.50	
All 3 CD-ROMs	A\$97.50	
A Visual Atlas of Double Stars	A\$27.00	
A Visual Atlas of the Magellanic Clouds	A\$15.00	
Extra-Galactic Objects Discovered as Variable Stars	A\$15.00	
Atlas of Galaxy Trios	A\$ 6.00	
Introduction to Deep-Sky Observing	A\$ 7.50	
The 'Non-Existent' Star Clusters of the RNGC	A\$ 6.00	
Double Star Section Circulars Nos. 2, 3, 4, 5 ( <i>price each</i> )	A\$ 6.00	
Double Star Section Circulars Nos. 6, 7, 8, 9, 10 ( <i>price each</i> )	A\$12.00	
The Deep Sky Observer – any 2002 or 2001 issue	A\$12.00	
The Deep Sky Observer – any 2000 issue	A\$ 4.50	
The Deep Sky Observer – any earlier issue	A\$ 3.00	
Any Handbook	A\$ 9.00	
<b>Total (Cheque enclosed)</b>		<b>£</b>

I enclose A\$ ..... (please add A\$2 to cover cost of post & packing on orders *less* than A\$60). Please make cheques payable to ***"The Webb Society"*** and do not forget to indicate if a particular issue is required for Handbooks, Double Star Section Circulars or other periodicals.

Name: .....

Address: .....

.....

Signature: ..... Date: .....

**Please send this form with your cheque made payable to "The Webb Society" to Jenni Kay, P.O. Box 74, Lobethal, South Australia 5241, Australia**